

SPIXIANA	16	1	5-17	München, 30. April 1993	ISSN 0341-8391
----------	----	---	------	-------------------------	----------------

New genera and species of Afrotropical Canestriniidae

(Acari, Astigmata)

By Ryszard Haitlinger

Haitlinger R. (1993): New genera and species of Afrotropical Canestriniidae (Acari, Astigmata). – *Spixiana* 16/1: 5-17.

Three genera *Barbiangia*, *Sorbinophela*, *Phelliculophela* and five species: *Barbiangia alvari*, *Sorbinophela sandyi*, *Phelliculophela roaldi*, *Boetophela ephraimi* and *B. werneri* are described as new. The genus *Boetophela* Haitlinger, 1989 is redescribed. Description of male, new hosts and localities for *B. ginae* Haitlinger are given. A key for determining african genera of canestriniid mites is presented.

Ryszard Haitlinger, Department of Zoology, Agricultural Academy, 50-205, Wrocław, Cybulskiego 20, Poland.

Introduction

Prior to this work, 15 genera: *Cetonicola* Coor., *Paraphagella* Coor., *Afrocanestrinia* Coor., *Diplognatophilus* Coor., *Percanestrinia* Berl., *Coleopterophagus* Berl., *Donnelafontia* Lav., *Ambilohylla* Haitl., *Athogavia* Haitl., *Diplopodocoptes* Fain, *Saniothiana* Haitl., *Olgattia* Haitl., *Irmongia* Haitl., *Chelinochroa* Summ. & Schust., *Anaspistes* Summ. & Schust., and 25 species: *Cetonicola hispidus* Coor., *C. robertsoni* Lav., *C. vatus* Haitl., *Diplognatophilus africanus* Coor., *D. ethiopicus* Haitl., *Afrocanestrinia straeleni* Coor., *Paraphagella princeps* Coor., *P. eudicellae* Coor., *P. minor* Coor., *Percanestrinia maroccana* Coor., *Diplopodocoptes transkeiensis* Fain, *Donnelafontia calostegis* Lav., *D. suatotha* (Haitl.), *Chelinochroa dictyophora* Summ. & Schust., *Anaspistes unguiculatus* Summ. & Schust., *Coleopterophagus quadrisetosus* Träg., *C. pulcher* Coor., *Ambilohylla favosa* Haitl., *Saniothiana pycnosa* Haitl., *S. barumbaica* Haitl., *Athogavia tanzanica* Haitl., *A. nosiana* Haitl., *A. gamana* Haitl., *Olgattia useguaica* Haitl., and *Irmongia helgae* Haitl. were described from Africa (Trägårdh 1904, Cooreman 1953, 1955, Lavoipierre, 1958, Summers & Schuster, 1982, Fain, 1987, Haitlinger, 1989 a, b, 1990). Genus *Boetophela* from Indonesia was described as *B. ginae* Haitl. based on one specimen. This species was described from wrongly labelled host and continent (Haitlinger, 1989b). Further specimens of *B. ginae* collected in Africa and some species described in this paper belonging to the genus *Boetophela* indicated that these mites live in Africa.

The mites were obtained from the collection of the Institute of Zoology of the Polish Academy of Sciences, Warsaw (IZPAS) and the Museum of Natural History of the Wrocław University (MNHU).

Measurements are given in Microns (µm).

Barbiangia, gen. nov.

Type species: *Barbiangia alvari*, spec. nov.

Dorsal integument partly ornamented by weakly visible longitudinal lines, Setae 1_2 long; longer than he. Subterminal spur on tarsi I-IV very small. Setae cx III, IV long flagelliform, Bases of semilong setae vi narrowed.

Female. Below genital region 6 pairs of setae. Male. Genital apparatus very long. Below genital region two suckers and four pairs of setae,

Gender: Feminine.

Remarks. The new genus is very similar to *Canestrinia* Berl. It can be distinguished by longer setae l_2 than he, bases of setae vi placed side by side, setae d_5 distinctly shorter than l_5 , 6 pairs of setae below genital region in females and very long genital apparatus.

Barbiangia alvari, spec. nov.

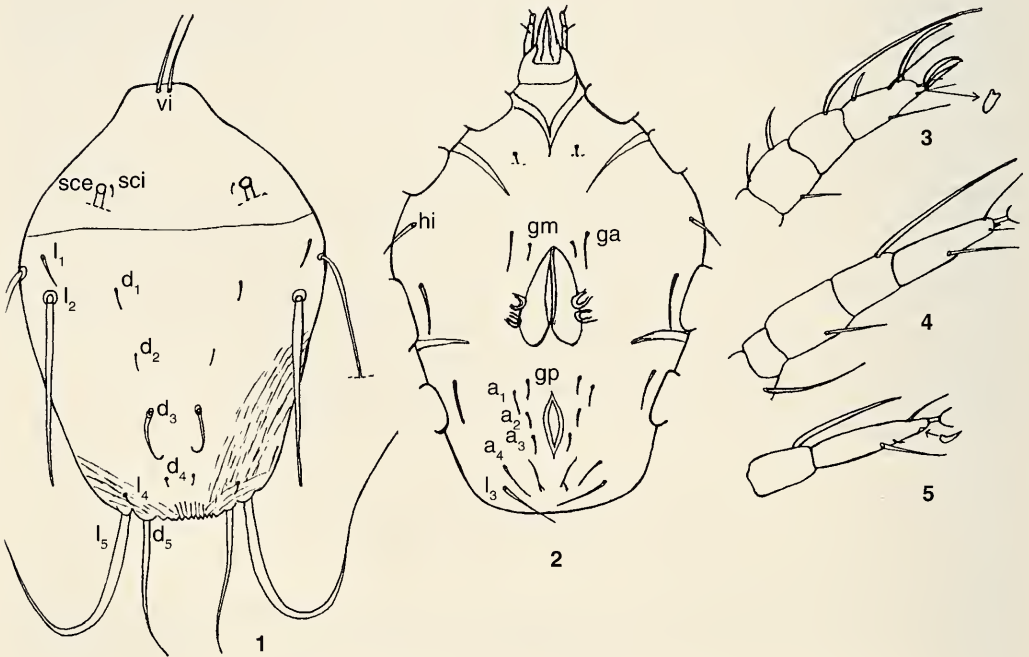
Figs 1-7

Types: Holotype ♀, Tanzania, Zanzibar, leg. Tyszkiewicz, 1891. - Paratypes: 1 ♀, 2 ♂♂, as holotype, all from undetermined Cetoniinae (Scarabaeidae), MNHWU.

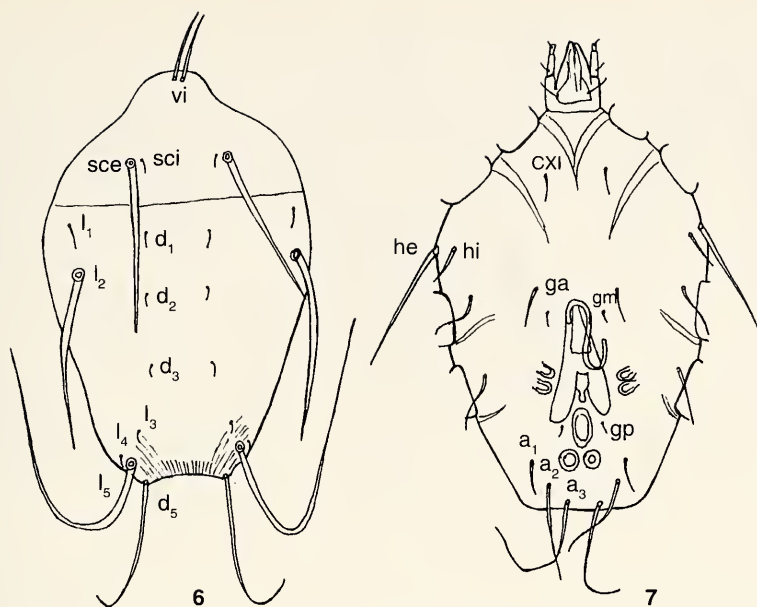
Female. Dorsum weakly ornamented by longitudinal lines only in posterior part of idiosoma. Suture separating propodosoma from hysterosoma present. Setae vi semilong. Setae l_2 and l_5 long, setae he and d_5 distinctly shorter. Setae d_3 thicker than l_1 , d_1 , d_2 , d_4 , l_4 (Fig. 1), Ventral side of idiosoma bears short setae hi, two pairs of paragenital setae, and below genital region 6 pairs of setae of which l_3 are longest (Fig. 2). Tarsi I-II shorter than Ta III-IV, bearing pads in which the claw exceeds the tip of each pad. All subterminal spurs on tarsi I-IV small. Setae on genu I short, subequal (gda I, gdp I), also setae sge III, st IV subequal. Seta on tibia I-IV rather short (Figs 3-5).

Measurements, Length of idiosoma 520 in holotype, 568 in paratype, width 380, 368, vi 100, 88, sci 12, -, hi 42, 42, d_1 16, -, d_2 20, -, d_3 62, -, d_4 8, -, l_1 42, 40, l_2 232, -, l_3 70, -, l_4 8, -, Ta I 46, 46, Ta II 44, Ta III 60, 58, Ta IV 64, 60, seta on Ti I 96, 84, Ti II 92, 86, Ti III 84, 80, Ti IV 60, 50, gda I 24, 22, gdp I 22, -, sge III 42, 40, st III 40, 46, st IV 50, -.

Male. Dorsal setae as in female but d_3 not longer than other setae of series d (Fig. 6). Ventral side of idiosoma with two pairs of setae above genital region and four pairs of setae below this region. Setae a_2 , a_3 distinctly longer than pg and a_1 . Two large suckers below anal region. Setae cx III, cx IV relatively long (Fig. 7). Legs I-IV as in female.



Figs 1-5. *Barbiangia alvari*, spec. nov., ♀. Idiosoma, dorsal view. 2. Idiosoma, ventral view. 3. Leg I, tarsus-genu. 4. Leg III, tarsus-femur. 5. Leg IV, tarsus-tibia.



Figs 6-7. *Barbiangia alvari*, spec. nov., ♂. 6. Idiosoma, dorsal view. 7. Idiosoma, ventral view.

Measurements. Length of idiosoma 504, 480, width 384, 332, vi 86, -, sci 10, 12, hi -, d₁ 16, 14, d₂ -, 14, l₁ 28, 32, l₂, ~ 216, ~ 216, l₃ 10, -, l₄ 10, 10, genital region 144, 132, Ta I 46, 46, Ta II 48, 44, Ta III 58, 56, Ta IV 58, 56, seta on Ti I 80, 94, Ti II 84, 86, Ti III 84, -, Ti IV 50, 52, gda I -, 22, gdp I 16, 20, sge III 48, -, st III ~ 52, 46, st IV ~ 56, -.

***Barbiangia ethiopica* (Haitlinger, 1990), comb. nov.**

Diplognatophilus ethiopicus Haitlinger, 1990

Species very similar to *B. alvari*, spec. nov.. It can be distinguished by shorter idiosoma, thinner setae vi, l₃, shorter d₃, and especially by presence cuticular structure below anus.

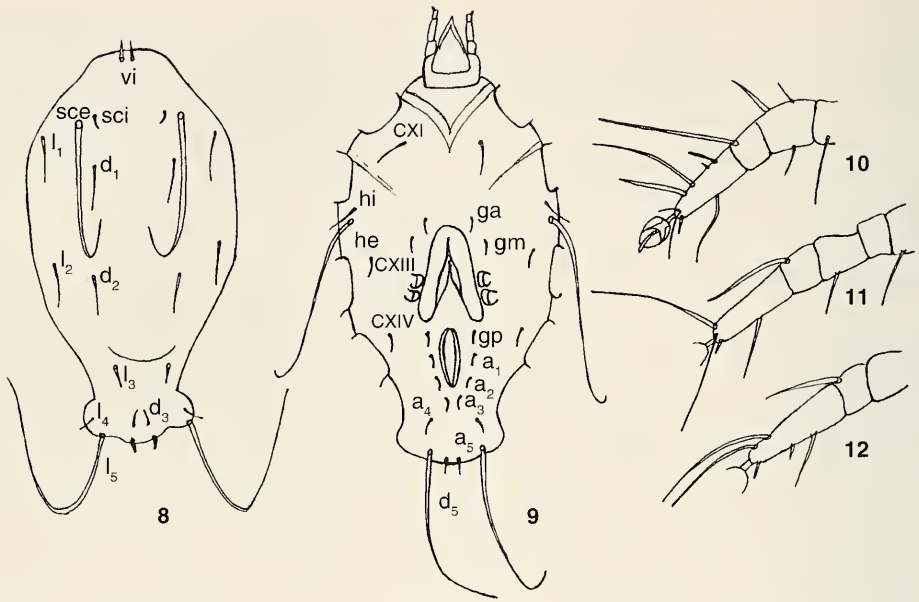
***Sorbinophela*, gen. nov.**

Type species. *Sorbinophela sandyi* n. sp.

Gender. Feminine.

Integument smooth with no ornamentation. Females with at least 6 pairs of setae below genital region, males with at least four pairs. Both sexes with very short vi, Short tarsi I-IV bear weakly developed spurlike seta distally.

Remarks. The new genus is similar to *Anaspistes* Sum. & Schust. and *Paraphagella* Coor. From the first genus it can be distinguished by poorly developed spurs on tarsi I-IV, four pairs of paranal setae on paranal pits (males) and absence of flagelliform setae between setae d₃. From *Paraphagella*, gen. nov. it can be distinguished by absence of suture separating propodosoma from hysterosoma, micropores males, dorsal ornamentation, and big subterminal spur especially on tarsi III-IV.



Figs 8-12. *Sorbiuophela sandyi*, spec. nov., ♀. 8. Idiosoma, dorsal view. 9. Idiosoma, ventral view. 10. Leg I, tarsus-femur. 11. Leg III, tarsus-trochanter. 12. Leg IV, tarsus-genu.

Sorbiuophela sandyi, spec. nov.

Figs 8-14

Types. Holotype: ♀, Botswana, n, Lake Ngami. - Paratypes 5 ♀♀, 3 ♂♂, as holotype, all from *Pocillophila maculatissima* Boh, (Cetoniinae), MNHWU.

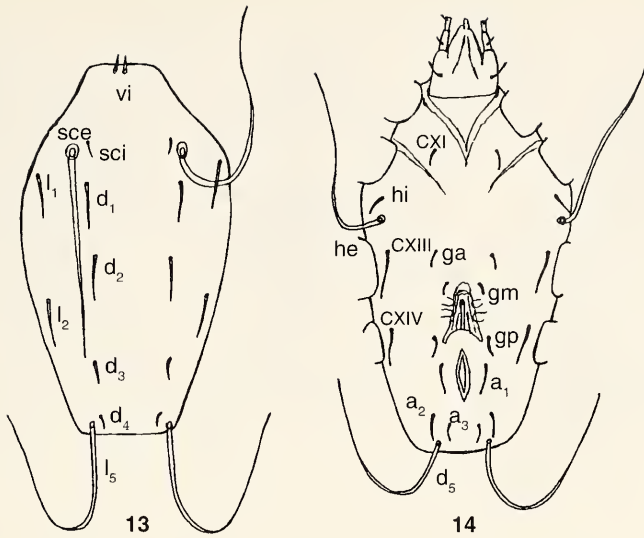
Female. Idiosoma elongated with distinctly narrowing opisthosoma. Dorsum bears two pairs of long setae sce and l_5 ; setae l_1 , l_2 , d_1 , d_2 longer than l_3 , d_3 , l_4 and d_4 . Setae l_3 somewhat thicker than other dorsal short setae. Setae vi very short (Fig. 8). Ventral side of opisthosoma with two pairs of paragenital setae ga, gm, four pairs of setae in anal region, and three pairs below them, a_4 , a_5 , d_5 . Moreover there are long setae he, short hi, cx I, III and IV (Fig. 9).

Tarsi I-IV with small subterminal spur, seta gda I on genu I over twice longer than gdp I. Setae on tibiae I-IV rather short, longest not longer than 80 (Figs 10-12).

Measurements. Length of idiosoma 340 in holotype, 344-376 in paratypes, width 184, 180-216, vi -, 12-16, sci 14, 12-14, hi 26, 22-28, d_1 28, ~ 36 - ~ 42, d_2 -, 40-42, d_3 16, 16-20, d_4 6, 6-8, l_1 42, 46-56, l_2 -, 40, l_3 16, 20-24, l_4 10, 8-10, Ta I 40, 42-46, Ta II 42, 42-46, Ta III 50, 52-56, Ta IV 56, 56-62, seta on Ti I 68, 70-80, Ti II 52, 52-60, Ti III 40, 42-48, Ti IV 32, 34-36, gda I 36, 36-40, gdp I 14, 12-44, sge III 32, 34-40, st III -, 28-34, st IV 28, -.

Male. Idiosoma elongated, with two pairs of long setae sce, l_5 , four pairs of very short setae vi, sci, d_3 and d_4 ; setae d_1 , d_2 and l_1 , l_2 twice to four times longer than others (Fig. 13). Ventral side of idiosoma bears long setae he and d_5 ; furthermore three pairs of coxal setae, setae ga distinctly above genital region, Two pairs of paragenital setae gm, gp and one pair of paranal setae a_1 . Below anal region two pairs of short setae a_2 , a_3 (Fig. 14). Genital apparatus short. Legs as in females.

Measurements. Length of idiosoma 320, 296, 320, width 170, 164, 188, sci 12, -, -, hi 20, 20, 22, d_1 46, 32, 34, d_2 36, 38, 32, d_3 20, -, -, d_4 12, -, -, l_1 46, 34, -, l_2 44, -, -, genital apparatus 46, 42, 40, Ta I 42, 40, 40, Ta III 52, 50, 50, Ta IV 52, 52, 50, seta on Ti I 66, ~ 60, ~ 68, Ti II 56, ~ 54, -, Ti III 42, 42, 42, Ti IV ~ 58, ~ 58, ~ gda I 36, 32, 32, gdp I 14, 12, 14, sge III 32, 34, -, st III 30, 22, 26, st IV, -, ~ 20, -.



Figs 13-14. *Sorbinophela sandyi*, spec. nov., ♂. 13. Idiosoma, dorsal view. 14. Idiosoma, ventral view.

***Phelliculophela*, gen. nov.**

Type species. *Phelliculophela roaldi*, n, sp.

Gender. Feminine.

Idiosoma ornamented, without suture separating propodosoma from hysterosoma. Setae vi barbed, dorsal setae except sci and vi long or semilong, Three pairs of paranal setae, Tarsi IV very long about twice longer than tarsi I-II. Seta on tibia IV very long. Seta gda I on genu I over twice times longer than gdp I. Subterminal spurs on tarsi I, II curved. Pads I-IV very small.

Remarks, The new genus differs from all other genera of canestriniid mites in the following combination of features: 1. setae l_1, l_2, l_4 very long; 2. setae vi barbed; 3. very long tarsus IV (over twice longer than tarsi I-II) with long ventral spinelike seta; 4. subterminal spurs on tarsi I-II curved; 5. very long seta on tibia IV.

***Phelliculophela roaldi*, spec. nov.**

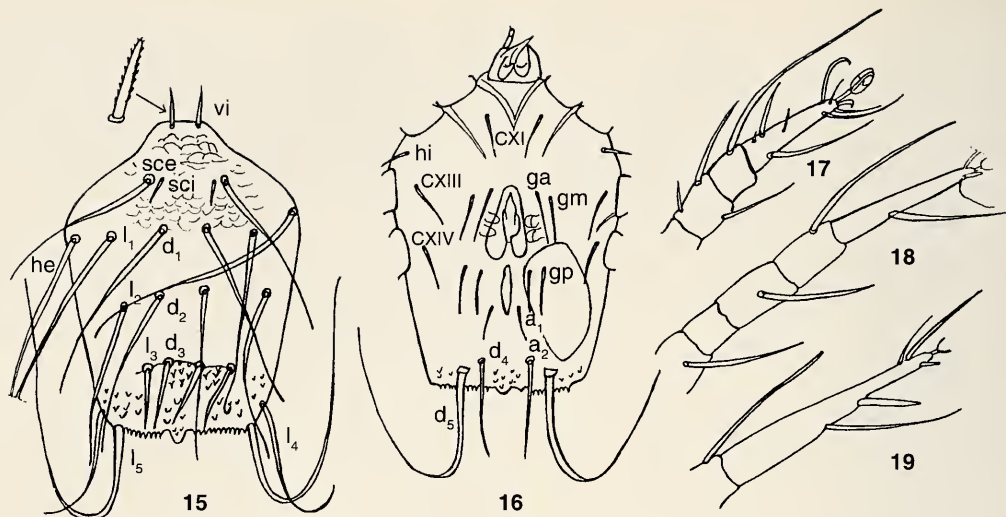
Figs 15-19

Types. Holotype: ♀, Cameroon, from *Goliathus goliathus* Dr. (Cetoniinae). IZPAS.

Female. Dorsum ornamented between vi and d1 as in Fig. 15. Setae d_3, l_1 with spined area and below with cuticular structure as in Fig. 15. Posterior margin of idiosoma spined with swelling in middle part. Setae vi weakly barbed, sci short, The remaining setae long or semilong. Setae d_3 and l_3 placed almost on the same level. Ventral side of idiosoma bears two pairs of paragenital setae ga, gm, three pairs of setae in anal region and below them long setae d_3 and semilong d_4 . Setae hi short (Fig. 16).

Tarsi I-II subequal, tarsus III distinctly longer, tarsus IV over twice longer than tarsi I-II. Subterminal spurs on tarsi I-II curved; on tarsi III-IV straight. Setae gda I over twice longer times than gdp I. Setae sge III, st III and st IV long. Seta on tibiae I-IV long, Tarsus IV with spinelike seta on ventral side (Figs 17-19).

Measurements. Length of idiosoma 600, width 424, vi 64, sci 48, hi 26, $d_1 \sim 354, d_2 \sim 322, d_3 \sim 116, d_4 \sim 140, l_1 \sim 352, l_2 \sim 312, l_3 \sim 128, l_4 \sim 254, Ta I 76, Ta II 80, Ta III 124, Ta IV 182, seta on Ti I 160, Ti II 166, Ti III 140, Ti IV 130, gda I 92, gdp I 38, sge III 72, st III 120, st IV \sim 130.$



Figs 15-19. *Phelliculophela roaldi*, spec. nov., ♀. 15. Idiosoma, dorsal view. 16. Idiosoma, ventral view. 17. Leg I, tarsus-genu. 18. Leg III, tarsus-trochanter. 19. Leg IV, tarsus-tibia.

Boetophela Haitlinger, 1989

Type species. *Boetophela ginae* Haitlinger, 1989

Redescription

Female. Idiosoma elongate with lateral margin spined; spines are present also on some parts of dorsal and ventral area (mainly below anal region). Dorsal area not ornamented, or with spines on lateral and posterior part of idiosoma. In anal region five pairs of setae; below them one pair of short setae d_4 . Suture separating propodosoma from hysterosoma absent, Claws on pads I-IV strongly developed, exceeding tip of pads (Figs 20-25).

Male. Dorsum without ornamentation. All dorsal setae, except sce and l_5 , short or minute. Opisthosoma distinctly developed, narrow. In anal region setae absent. Below anal slit two small pits, four pairs of short setae, and one pair of long setae. Tarsi IV with strong terminal claw; pad present or not; furthermore with thick subterminal spur, two subterminal, long flagelliform setae, and two ventral setae.

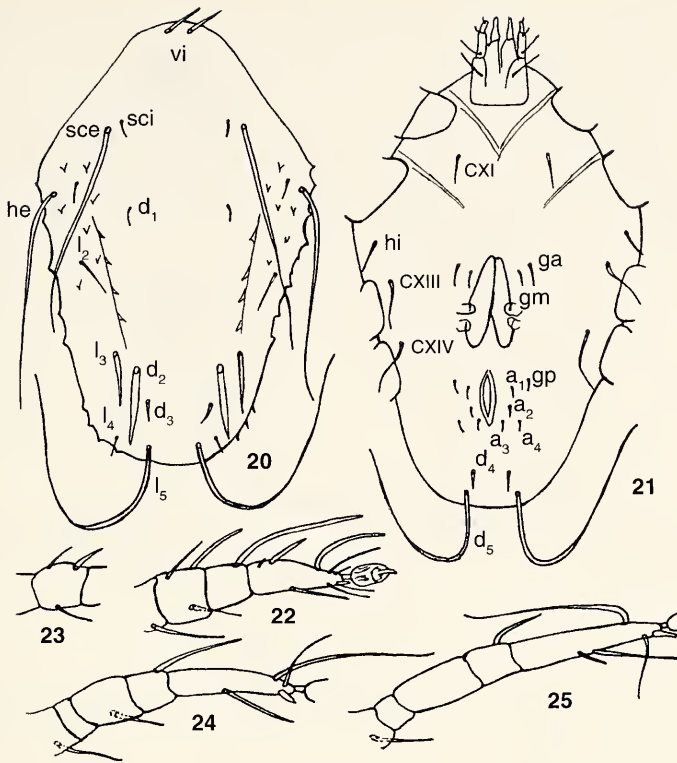
Remarks. This genus is similar to *Paraphagella* Cooreman, 1955. It can be distinguished by absence of suture separating propodosoma from hysterosoma, long setae he, five pairs of paranal setae (females), and subterminal spur on tarsi I-IV without concave tip.

Boetophela ginae Haitlinger, 1989

Figs 20-30

This species was described as associated with *Batocera rubus* (Cerambycidae) from Sumatra only on the base of one female. Further investigations proved that this species lives in Africa. Dimensions for females and males are given below.

Measurements. Length of idiosoma 496-552, width 288-336, vi 36-46, sci 20-24, hi 30-36, d_1 20-26, d_2 82-94, d_3 26-34, d_4 18-20, l_1 28-38, l_2 40-52, l_3 58-80, l_4 20-24, Ta I 58-64, Ta II 60-62, Ta III 72-76, Ta IV 86-96, seta on Ti I 88-96, Ti II 84-96, Ti III 56-60, Ti IV 36-46, gda I ~ 46 - ~ 50, gdp I 22-28, sge III 28-36, st III 40-44, st IV 34-40.



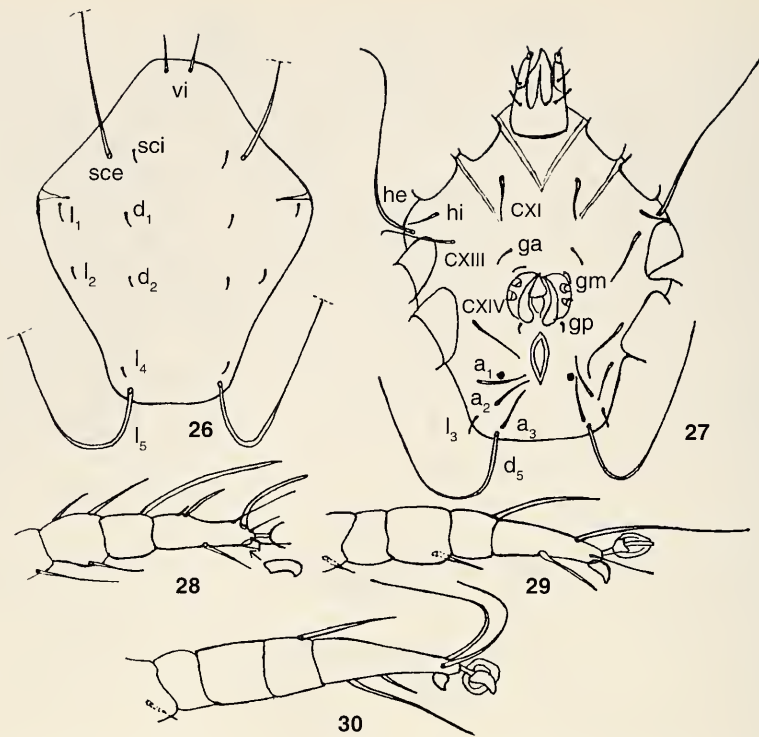
Figs 20-25. *Boetophela ginae* Haitl., ♀. 20. Idiosoma, dorsal view. 21. Idiosoma, ventral view. 22. Leg I, tarsus-femur. 23. Genu II. 24. Leg III, tarsus-trochanter. 25. Leg IV, tarsus-trochanter.

Male. Dorsum with two pairs of long setae sce and l_5 , the remaining ones small but vi distinctly longer (Fig. 26). Ventral side of idiosoma with relatively long flagelliform setae of series cx , Below anal slit three pairs of setae a_1, a_2, a_3 , distinctly shorter setae l_3 , and long setae d_3 . Setae he long, setae hi and paragenital setae short (Fig. 27). Tarsi I, III, IV as in Figs 28-30, Tarsi IV bear pads with thick claw and subterminal thick spur. Subterminal spurs I-II curved.

Measurements. Length of idiosoma 392, 400, width 328, 312, vi 42, 38, sci 18, -, hi 24, -, d_1 12, -, d_2 12, -, l_1 14, -, l_2 12, -, l_3 16, -, l_4 10, -, genital apparatus 60, 58, Ta I 62, 62, Ta II 62, 64., Ta III 72, 80, Ta IV 92, 102, gda I 48, 46, gdp I 26, 22, sge III 34, -, st III 26, -, seta on Ti I 90, 110, Ti II 90, 104, Ti III -, 72, Ti IV ~ 64, 72.

Localities. South Africa, Natal, 5 ♀♀, 2 ♂♂ from *Eudicella smithi* MacLeay; Transvaal, 2 ♀♀ from undetermined Cetoniinae.

Remarks. Females of this species differ from other species by long setae d_2, l_3 . Males can be distinguished by shape of opisthosoma (without enlargement in its posterior part) from *B. werneri*, spec. nov., by presence of one spur on tarsi IV - from *B. ephraimi*, spec. nov. From *B. robertsoni* (Lav.) it can be distinguished by shorter setae d_1 than l_1 , absence of dorsal ornamentation except for some spines, and presence of spines on lateral margins.



Figs 26-30. *Boetophela ginae* Haitl., ♂. 26. Idiosoma dorsal view. 27. Idiosoma, ventral view. 28. Leg I, tarsus-femur. 29. Leg III, tarsus-trochanter. 30. Leg IV tarsus-trochanter.

Boetophela ephraimi, spec. nov.

Figs 31-40

Types. Holotype. ♀, Ghana, Aschanti. - Paratypes 1 ♀, 2 ♂♂ as holotype, all from undetermined Cetoniinae. MNHWU.

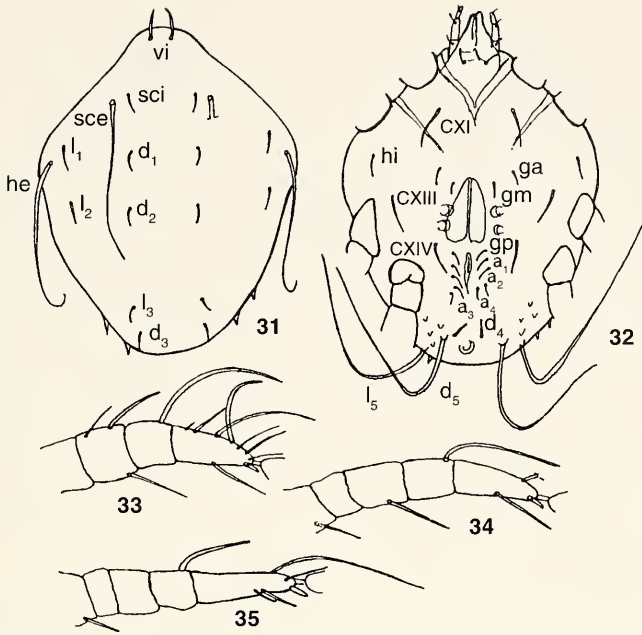
Female. Dorsum with two pairs of long setae sce, he, remaining ones short but vi longer. Lateral margins of opisthosoma with about two spines each, Setae l_3 near d_3 (Fig. 31). Ventral side of idiosoma bears five pairs of paranal setae arranged as in Fig. 32. Below them short setae d_4 and small cuticular formation, Bases of setae d_3 near d_4 , below them long setae l_5 . Opisthosoma with some spines. Legs I, III, IV as in Figs 33-35.

Measurements, Length of idiosoma 608 in holotype, 576 in paratype, width 472, 424, vi 62, -, sci 32, ~ 28, hi 32, 36, d_1 34, 36, d_2 30, -, d_4 -, 30, l_1 36, 38, l_2 30, 36, l_3 30, 32, l_4 30, 36, Ta I 80, 78, Ta II 80, 78, Ta III 76, 76, Ta IV 88, 82, seta on Ti I ~ 122, ~ 132, Ti II 126, ~ 136, Ti III ~ 106, 108, Ti IV ~ 56, 76, gda I ~ 42, 48, gdp I 30, 30, sge III 42, 40, st III 28, 30, st IV -, 28.

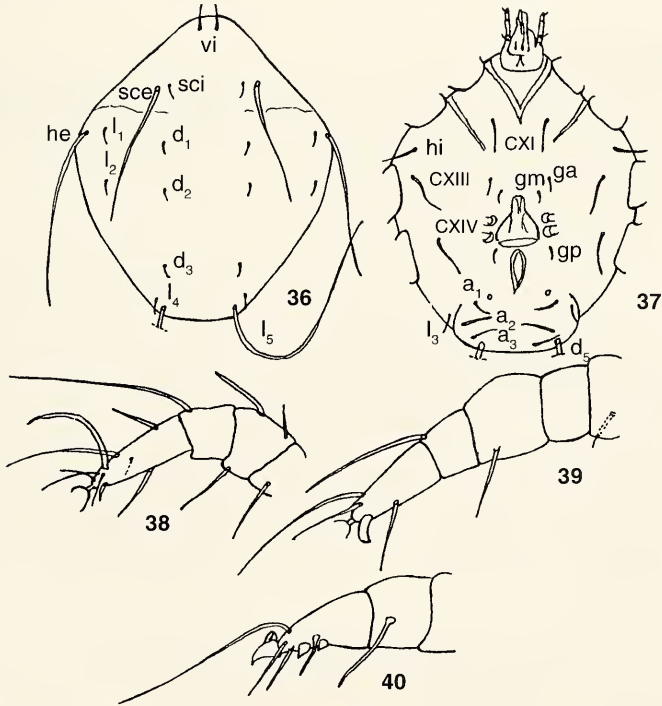
Male. Dorsum as in males of *B. ginae* but are visible setae d_3 (Fig. 36). Ventral side with relatively long genital apparatus, setae arranged as in *B. ginae* (Fig. 37). Tarsi I-IV equal but tarsi III, IV thicker than remaining ones. Tarsus IV without pad, with thick terminal claw; furthermore there are two small spurs (Figs 38-40).

Measurements. Length of idiosoma 528, ~ 536, width 56, 54, sci 24, 24, hi 30, 34, d_1 -, 20, l_1 -, 26, l_2 20, -, genital apparatus 92, 90, Ta I 76, 80, Ta II 76, 80, Ta III 76, -, Ta IV 76, 74, seta on Ti I ~ 132, ~ 132, Ti II 130, Ti III 130, 132, Ti III 100, -, gda I 46, -, sge III 46, -.

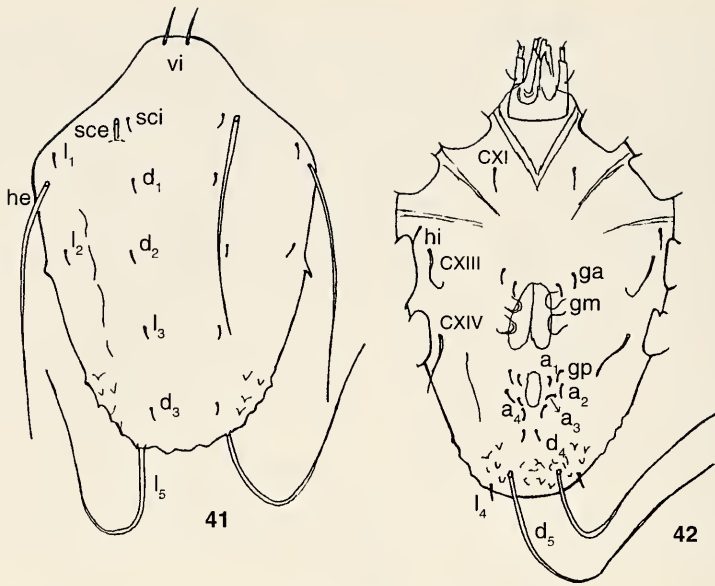
Remarks. The new species is similar to *B. wernerii*, spec. nov. It can be distinguished by at least twice times longer d_1 , d_2 , l_1 and l_2 in females, and by shape of opisthosoma, two ventral spurs on tarsi IV, and longer genital apparatus in males.



Figs 31-35. *Boetophela ephraimi*, spec. nov., ♀. 31. Idiosoma, dorsal view. 32. Idiosoma, ventral view. 33. Leg I, tarsus-genu. 34. Leg III, tarsus-trochanter. 35. Leg IV, tarsus-trochanter.



Figs 36-40. *Boetophela ephraimi*, spec. nov., ♂. 36. Idiosoma, dorsal view. 37. Idiosoma, ventral view. 38. Leg I, tarsus-femur. 39. Leg III, tarsus-trochanter. 40. Leg IV, tarsus-tibia.



Figs 41-42. *Boetophela wernerii*, spec. nov., ♀. 41. Idiosoma, dorsal view. 42. Idiosoma, ventral view.

***Boetophela wernerii*, spec. nov.**

Figs 41-46

Types. Holotype: ♀, Burundi, Bujumbura (Usumbura). - Paratypes: 3 ♀♀, 3 ♂♂, as holotype, all from *Plaesiorrhina mhondana* Ab. (Cetoniinae). IZPAS.

Female. Dorsum without ornamentation except for a few spines in posterior part of Idiosoma and on margins. Two pairs of long dorsal setae sce, l_5 ; the remaining ones short, but setae vi distinctly longer than the rest (Fig. 41). Ventral side of idiosoma with ornamentation below anal region. Short setae d_4 near paranal setae. Bases of setae d_5 relatively far from posterior margin of opisthosoma (Fig. 42). Legs as in *B. ephraimi*, spec. nov.

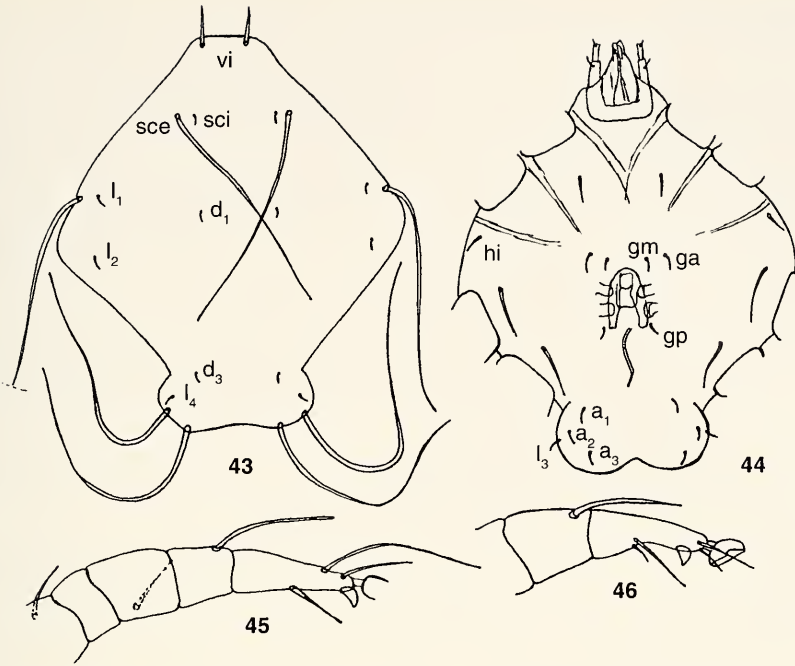
Measurements. Length of idiosoma 576 in holotype, 576, 552, 504 in paratypes, width 392, 398, 384, 320, vi 54, 50, -, 54, sci 18, 18, -, 20, hi 26, 32, -, 28, d_1 -, 14, -, 10, d_2 12; 14, -, -, d_3 12, -, -, d_4 12, -, -, l_1 14, 18, -, 18, l_2 12, -, -, 14, l_3 14, 14, -, 12, l_4 -, 22, -, 20, Ta I 62, 64, 64, 70, Ta II 64, 66, 66, 72, Ta III 86, 88, 84, 88, Ta IV 110, 108, 104, 114, seta on Ti I 112, 110, -, 114, Ti II 110, 112, ~ 106, 110, Ti III -, 70, -, Ti IV 42, 38, 32, 40, gda I 44, 52, -, 56, gdp I 28, 26, 30, 34, sge III 36, 30, 26, 58, st III 32, -, -, 34.

Male. Dorsum without ornamentation, with four pairs of long setae sce, he, l_5 , d_5 , the remaining ones except vi very short. Opisthosoma in posterior part enlarged (Fig. 43). Ventral side of idiosoma with relatively long setae cx I, III, IV, the remaining setae very short. Setae a_1 , a_2 , a_3 far from anal slit; genital apparatus rather short (Fig. 44). Legs III, IV as in Figs 45-46.

Measurements. Length of idiosoma 440, 440, 416, width 360, 360, - 352, vi 46, -, 52, sci 16, 18, 16, hi 22, 20, 20, d_1 10, -, d_2 -, -, 10, d_2 -, -, 10, d_3 10, -, 10, l_1 14, 16, 16, l_2 10, -, 14, l_3 16, 16, 18, l_4 -, 18, -, genital apparatus ~ 52, ~ 52, 62, Ta I 64, 72, 68, Ta II 66, 74, 70, Ta III 80, 80, Ta IV 74, 82, 80, seta on Ti I 104, ~ 108, ~ 100, Ti II 102, 110, ~ 102, Ti III 66, 70, 72, Ti IV 68, 80, 82, gdp I 48, 48, 42, gdp I 32, 28, 28, sge III 38, 32, 34, st III 34, 44, 42.

***Boetophela robertsoni* (Lavoipierre, 1958), comb. nov.**

Species described from Tanzania as *Cetonicola robertsoni* Lav. collected on *Dicronorhina oberthuri* (Cetoniinae). This species belongs to genus *Boetophela*. It is very similar to *B. ginae* Haitlinger. The last



Figs 43-46. *Boetophela wernerii*, spec. nov., ♂. 43. Idiosoma, dorsal view. 44. Idiosoma, ventral view. 45. Leg III, tarsus-trochanter. 46. Tarsus-tibia.

species differs from *B. robertsoni* in shorter setae d_1 than l_1 , absence of dorsal ornamentation except for some spines and present spines on lateral margins.

Key to African genera of canestriniid mites

♂♂

- 1 (8) Near anal slit with two large suckers 2
- 2 (3) Setae l_2 very long, many times longer than l_1 , d_1 , d_2 . Bases of setae vi narrowed *Barbiangia*, gen. nov.
- 3 (2) Setae l_2 shorter, never many times longer than remaining ones. 4
- 4 (5) Opisthosoma with two long membraneous lobes; Two pairs of tarsal suckers on legs IV
..... *Diplopodocoptes* Fain, 1987.
- 5 (4) Opisthosoma without membraneous lobes. Suckers on tarsi IV absent 6
- 6 (7) Opisthosoma well developed, in posterior part enlarged. Length of tarsi I-IV varied. Suckers relatively far from posterior margin of opisthosoma *Percanestrinia* Berlese, 1911.
- 7 (6) Opisthosoma very short. Length of tarsi I-IV subequal. Suckers near posterior margin of opisthosoma
..... *Ambilohylla* Haitlinger, 1990.
- 8 (1) Near anus without large suckers. 9
- 9 (10) Setae l_2 very long, many times longer than l_1 , d_1 *Donnelafontia* Lavoipierre, 1958.
- 10 (9) Setae l_2 short, never many times longer than l_1 , d_1 11
- 11 (12) Tarsi IV terminal with very thick claw *Boetophela* Haitlinger, 1989.
- 12 (11) Tarsi IV with normally shaped terminal claw 13
- 13 (14) Epimera I free *Afrocanestrinia* Cooreman, 1955.

14 (13)	Epimera I fused	15
15 (16)	Subterminal spurs on tarsi I-IV with concave tip	<i>Paraphagella</i> Cooreman, 1955.
16 (15)	Subterminal spurs on tarsi I-IV without such shaped tips.	17
17 (18)	Tarsi IV in addition to subterminal spur, with two thick ventral spinelike setae	<i>Athogavia</i> Haitlinger, 1989.
18 (17)	Tarsi IV with thin ventral setae or with only one thick seta.	19
19 (20)	Tarsi III-IV with large subterminal spur. Below genital region at least 5 pairs of setae	<i>Anaspistes</i> Summers & Schuster, 1982.
20 (19)	Tarsi III-IV with relatively small subterminal spur. Below genital region fewer than 5 pairs of setae.	21
21 (24)	Dorsum without ornamentation.	22
22 (23)	Setae vi very short (below 20 u). Anal region without anal pits. Below genital region 4 pairs of setae	<i>Sorbinophela</i> , gen. nov.
23 (22)	Setae vi rather long (over 50 u). Anal region with anal pits. Below genital region 2 pairs of setae	<i>Saniothiana</i> Haitlinger, 1990.
24 (21)	Dorsum weakly or distinctly ornamented.	25
25 (26)	Dorsum weakly ornamented, paranal pits present	<i>Coleopterophagus</i> Berlese, 1882.
26 (25)	Dorsum distinctly ornamented, paranal pits absent.	27
27 (28)	Suture separating propodosoma from hysterosoma present. Dorsum with ornamentation in various patterns	<i>Chelinochroa</i> Summers & Schuster, 1982.
28 (27)	Suture separating propodosoma from hysterosoma absent. Dorsum with ornamentation cellular in shape	<i>Cetonicola</i> Cooreman, 1955.

♀ ♀

1 (4)	Setae l_2 very long, many times longer than l_1 , d_1 , d_2	2
2 (3)	Bases of setae vi narrowed. Two pairs of long or semilong caudal setae	<i>Barbiangia</i> , gen. nov.
3 (2)	Bases of setae vi not narrowed; caudal setae very short	<i>Donnelafontia</i> Lavoipierre, 1958.
4 (1)	Setae l_2 as long as length as setae l_1 , d_1 , d_2	5
5 (6)	Tarsi IV with two thick ventral spinelike setae	<i>Athogavia</i> Haitlinger, 1989.
6 (5)	Tarsi IV without ventral spinelike setae or with only one such seta.	7
7 (8)	Tarsi IV very long, over twice times longer than tarsi I, with one relatively long spinelike ventral seta	<i>Phelliculophela</i> , gen. nov.
8 (7)	Tarsi IV not very long, never twice longer than tarsi, without spinelike ventral seta.	9
9 (12)	Lateral margins spined.	10
10 (11)	Below genital region 3 pairs of setae. Postanal fossa present	<i>Olgattia</i> Haitlinger, 1990.
11 (10)	Below genital region at least 6 pairs of setae. Postanal fossa absent	<i>Boetophela</i> Haitlinger, 1989.
12 (9)	Lateral margins without spines.	13
13 (14)	Tarsi III-IV with subterminal spur with concave tip	<i>Paraphagella</i> Cooreman, 1955.
14 (13)	Tarsi III-IV with subterminal spur without concave tip.	15
15 (16)	Dorsum ornamentation consisting of longitudinal or transverse lines	<i>Saniothiana</i> Haitlinger, 1990.
16 (15)	Dorsum without ornamentation, or ornamented otherwise.	17
17 (18)	Cuticule almost completely mamillate, Gnathosoma containing 2 large triangular projections lying on the anteroventral surface of gnathosoma	<i>Diplopodocoptes</i> Fain, 1987.
18 (17)	Cuticule not mamillate. Gnathosoma without such projections.	19
19 (22)	Setae sci and hi long, never minute or very short	20
20 (21)	Four pairs of paranal setae	<i>Percanestrinia</i> Berlese, 1911.
21 (20)	Three pairs of paranal setae	<i>Coleopterophagus</i> Berlese, 1882.
22 (19)	Setae sci and hi short or minute.	23
23 (28)	Dorsal surface entire or partly ornamented.	24

24 (25)	Dorsal integument entire with ornamentation cellular in shape, without suture separating propodosoma from hysterosoma	<i>Cetonicola</i> Cooreman, 1955.
25 (24)	Dorsal integument with different ornamentation.	26
26 (27)	Dorsal integument with ornamentation only in posterior part of idiosoma. Suture separating propodosoma from hysterosoma absent	<i>Irmongia</i> Haitlinger, 1990.
27 (26)	Dorsal integument completely ornamented. Suture separating propodosoma from hysterosoma present	<i>Chelinocluva</i> Summers & Schuster, 1982.
28 (23)	Dorsal integument without ornamentation.	29
29 (30)	Epimera I free	<i>Afrocanestrinia</i> Cooreman, 1955.
30 (29)	Epimera I fused	31
31 (32)	Suture separating propodosoma from hysterosoma absent. Opisthosoma enlarged in its posterior part	<i>Sorbinophela</i> , gen. nov.
32 (31)	Suture separating propodosoma from hysterosoma present. Opisthosoma not enlarged in posterior part	33
33 (34)	Dorsal hysterosomal setae subequal. Tarsi I-IV with a strong spur-like seta distally	<i>Anaspistes</i> Summers & Schuster, 1982
34 (33)	Dorsal hysterosomal setae not subequal. Tarsi I-IV without strong spur-like seta distally	<i>Diplognatophilus</i> Cooreman, 1955.

Acknowledgements

I would like to express my sincere thanks to Dr. A. Slipinski (IZPAS) and Dr. M. Kak (MNHWU) for the loan of the specimens.

References

- Cooreman, J. 1953. Notes et observations sur les Acariens. V. Sur le genre *Cecidopus* Karsch (Erythraeidae) et sur une espèce nouvelle du genre *Percanestrinia* Berlese (Canestriniidae). - Bull. Inst. Roy. Sci. Nat. Belg. 29, 31: 1-12.
- 1955. Exploration du Parc National Albert, Mission G.F. de Witte 1933-1935, 85: 1-43, Bruxelles
- Fain, A. 1989. Notes on mites associated with Myriapoda. 1. Three new astigmatic mites from Afrotropical Myriapoda (Acari, Astigmata). - Bull. Roy. Sci. Nat. Belg. Entom. 57: 161-172
- Haitlinger, R. 1989a. New canestriniid mites (Acari, Astigmata, Canestriniidae) associated with beetles of the genera *Oryctes*, *Trichogomphus* and *Pentodon* (Insecta, Coleoptera, Scarabaeidae, Dynastinae). - Wiad. Parazyt. 35: 337-355
- 1989b. New canestriniid mites (Acari, Astigmata, Canestriniidae) associated with Scarabaeidae and Cerambycidae (Insecta, Coleoptera) from the Indo-Australian Region.-Wiad. Parazyt. 35: 585-601
- 1990. New canestriniid mites (Acari, Astigmata, Canestriniidae) associated with beetles of the families Carabidae, Scarabaeidae, Tenebrionidae and Passandridae (Insecta, Coleoptera). - Ann. zool. 43: 311-325
- Lavoipierre, M. 1958. Notes acarologiques. I. Deux nouveaux genres et quatre nouvelles espèces d'acarions (Acarina, Mesostigmata et Sarcoptiformes) de l'Afrique occidentale et orientale. - Ann. parasitol. 33: 603-618
- Summers, F. M. & R. O. Schuster. 1982. New canestriniid mites from beetles of the family Cerambycidae. - Int. J. Acarol. 8: 33-46
- Trägårdh, I. 1904. Acariden aus Ägypten und dem Sudan. - Results of the swedish zoological expedition to Egypt and the White Nile 1901, 20. Upsala